

Imagine a world where limitless connectivity
means limitless possibility.

Join us to be the one who makes it Possible.

Ericsson-LG is Hiring

Be part of our global team
ericsson.com/careers

This is
Ericsson



This is Ericsson



We enable the full value of connectivity by creating game-changing technology and services

Employees worldwide

105,500

R&D budget (SEK b)

47

Sales (SEK b)

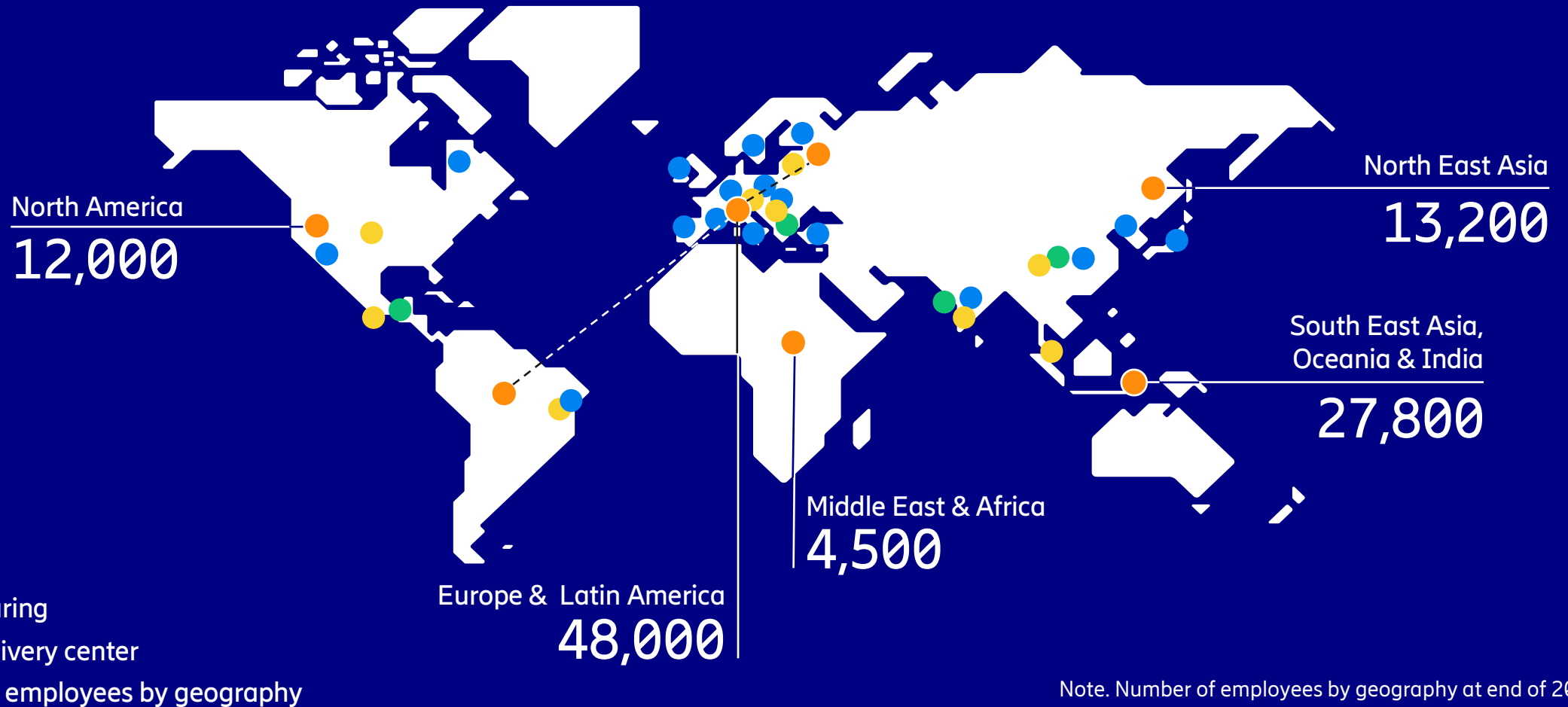
272

Note 1. Data as of the Q4 2022 report

Note2. Average rate during FY 2022 – SEK/USD: 10.04

Global presence and capabilities

Serving customers in more than 180 countries



Note. Number of employees by geography at end of 2022

We are a world leader in mobile networks

Leading position in 5G

A stylized world map in a dark blue color, centered behind the three main text blocks.

Industry analysts:
**Ericsson
5G Leader**

Ericsson presence:
**140+ live 5G
networks**

Ericsson customers:
**Leading in
performance**

5G deployments in the early days and scaling fast.

As a leader, we are investing in our portfolio to make it easier to close that gap.



The world's leading cellular patent portfolio

More than 60,000 granted patents

Creating a connected
world by making innovations easily available

This is Ericsson-LG

Ericsson-LG at a glance



Joint venture of Swedish innovation and homegrown technology in Korea

- 2010 July, Foundation of LG-Ericsson
- 2012 September, Company name change to Ericsson-LG
- Partnership: Ericsson(75%) & LG Electronics(25%)
- CEO: Hannes Ekstrom
- CFO: Haengman Heo

900 employees realizing GLOCAL company value

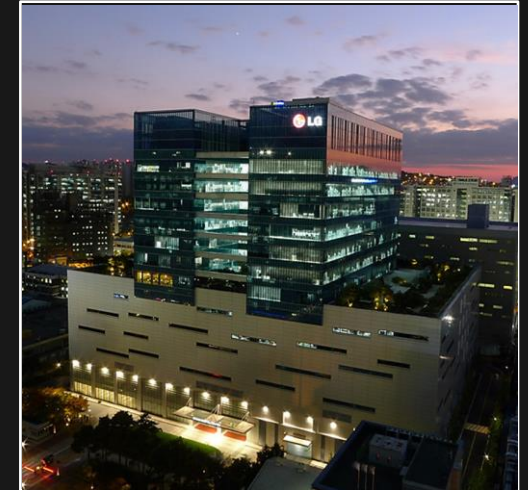
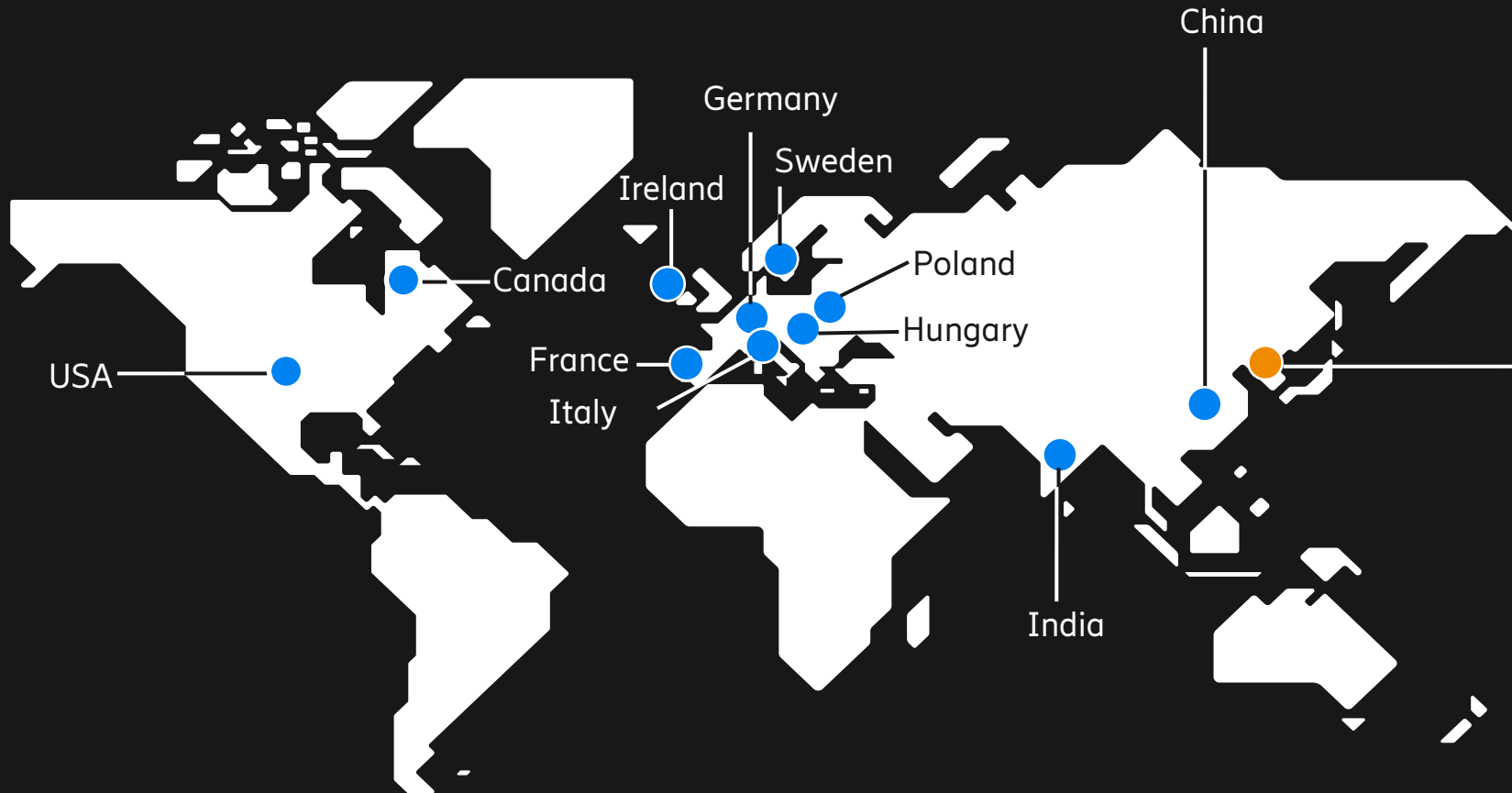
- Total number of employees in Ericsson-LG and Ericsson-LG Enterprise
- Including 400+ mobile technology R&D engineers
- HQ: Gangnam, Seoul
- Seoul R&D Campus: Gasan, Seoul

A living witness of Korean telecommunication history of 125+ years

- 1896, First Magneto telephone switch to Chosun Dynasty
- 1995, World first CDMA network commercialization
- 2011, LTE network deployment for SKT, KT and LGU+
- 2015~, 5G prototype demos with multiple use cases
- 2019~, 5G commercialization with SKT, KT and LGU+



Ericsson R&D centers

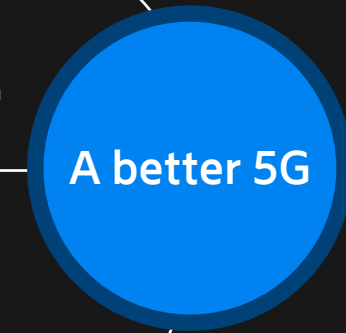
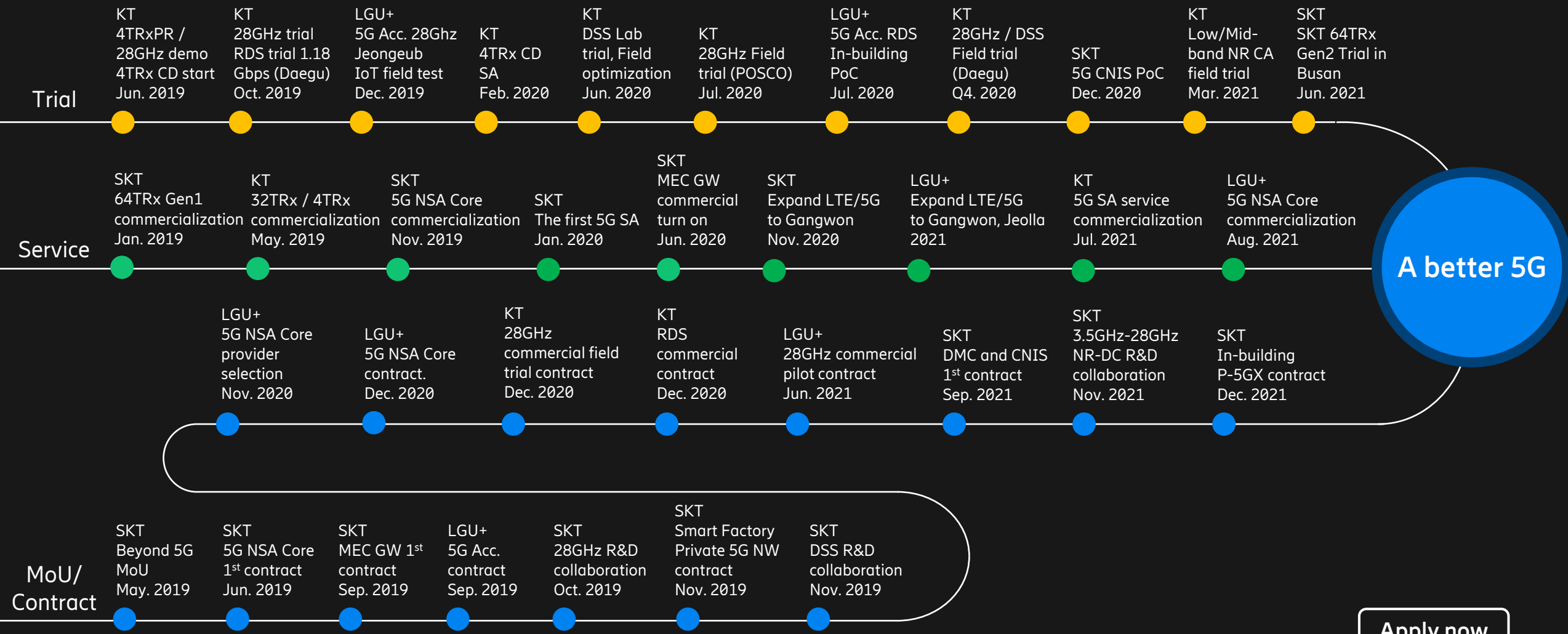


Seoul R&D

- 1985 foundation
- The largest R&D of foreign invested ICT companies in Korea
- Project : 5G RAN, 5G Cloud RAN, 5G Core, 6G/ B5G SW and CES

[Apply now](#)

5G leadership in Korea



Apply now

World's first 5G core solution with SK Telecom



- Delivered bare-metal cloud-native dual-mode 5G Core solution to SK Telecom
- **The first service provider in the world to offer commercially live 5G services using a bare-metal infrastructure solution.**
- Reaffirm their position as technology leader in South Korea
- Leading the way for consumers and enterprises through 5G network flexibility

Apply now

Life in Ericsson-LG

Living our values in everything we do



Professionalism

Respect

Perseverance

Integrity

[Apply now](#)

Delivering sustainable value

Global and local partnership

Ericsson pursues the best resources and partners globally. We are proud to work with hundreds of local partners in Korea.

Diversity and inclusion

Girls in ICT event to promote diversity in ICT industry in celebration of International Women's Day.



[Apply now](#)

Diversity and inclusion

At Ericsson, we believe that diverse, inclusive teams drive performance and innovation, creating greater business value. We recognize that diversity encompasses an equally diverse range of things, including; cognitive perspectives, education, work experiences, personal life experiences, race, gender, ethnicity, sexual orientation as well as many more. Therefore:

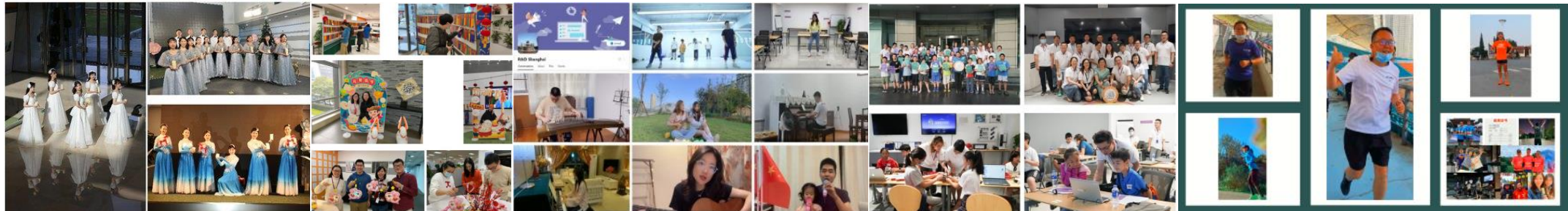
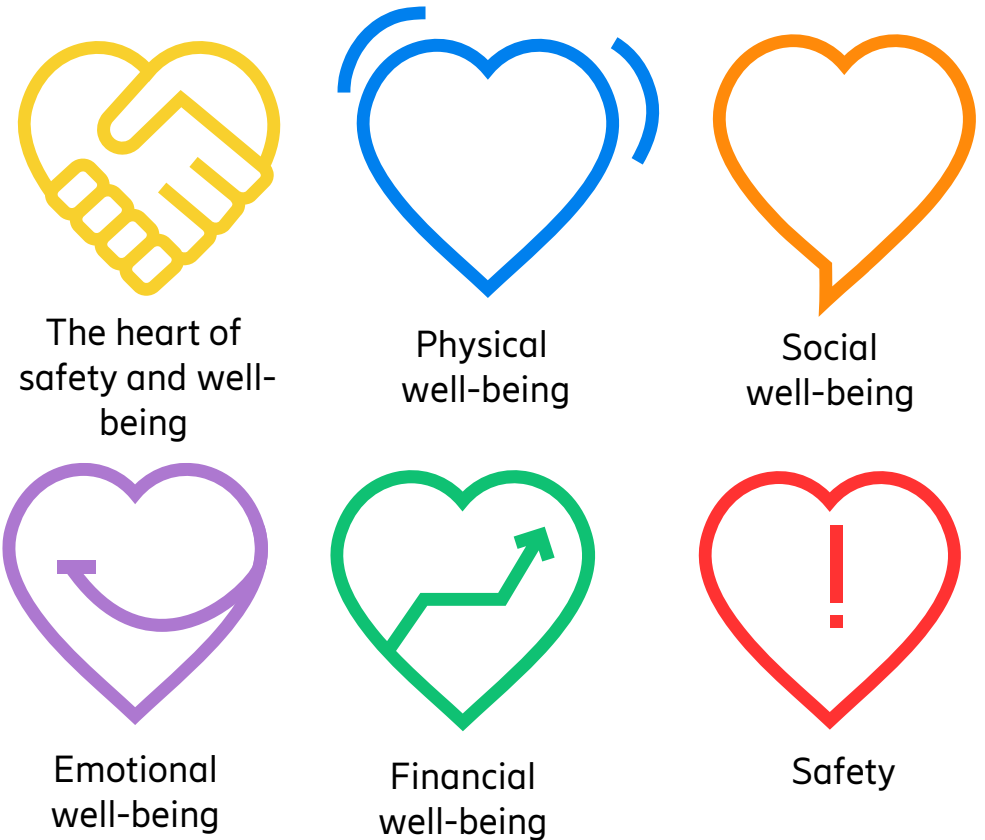
- We consider and create diversity and inclusion in everything we do, building teams that reflect our approach
- We feature a variety of role models and communicate in various channels, ensuring our brand reaches diverse communities
- We encourage programs that include a wide variety of people, like mentoring circles and advisory boards
- We create space for you to bring your unique perspective

[Read more](#)



Well-being

- Ericsson is committed to employee well-being and providing a safe and healthy work environment. We believe we are well when we feel physically healthy, emotionally balanced and resilient, financially in control and socially connected to our communities.
- In Ericsson-LG, well-being is one of the key focus and we commit to provide strong support to our diverse employees, and we are on the journey to be a leading company where people feel healthy, happy, connected no matter where we are!



Employee benefits

At Ericsson, we believe great accomplishments deserve great benefits and transparent rewards. We strive to offer the kinds of rewards, benefits and perks that you would expect from a global business that takes good care of its people.

Working condition

- 선택적 근로시간제도 (Flexible Working Hour)
- 하이브리드 근무제도 (50% Working from Home)

Health

- 재택근무 가구 지원 프로그램 (Working From Home Furniture Program)
- 본인 및 배우자 종합 건강 검진 지원 (Medical Check-up)
- 임직원 단체보험 (Group Insurance)

Subsidy

- 본인 및 가족 의료비 지원 (Employee Medical Expense Subsidy)
- 대학교 포함 자녀학자금 지원 (Children Education Subsidy)
- 자녀 보육비 지원 (Children Care Subsidy)

Meals

- 중식 제공 (Free Lunch)
- 선택적 복리후생제도 (Cafeteria Benefit)

Housing

- 주택 자금 대출 (Housing Loan)
- 휴양시설 (Condominium)

Development

- 영어 교육 프로그램 및 교육비 지원 (English Education Program)

[Apply now](#)

Hybrid working & WFH furniture

- Our ambition is to offer a connected, inclusive working environment that inspires us to deliver a great customer experience, with the flexibility needed to maintain a positive work-life balance.
- You'll always be welcome to the office. We believe our offices play an important role in building a strong culture and a connection to the Ericsson community.
- We envision that our people will, on average, split their time 50/50 between the office and remote work, but working remotely is always voluntary.
- We also provide employees with a solution for ergonomic furniture including chair, liftable table, and lamp to improve employees' WFH environment.



Employee clubs and activities





To create connections that make
the unimaginable possible.



Imagine Possible

ericsson.com/careers